

## STONIMAGE

### How to be A Global Leader in Services?

Many of us are facing after-sales trouble no matter private or governmental control company, time is invaluable and most worrying for us. Once the machine shut down, the production shut down either, and we start to lose money quickly and come to an operation crisis ..... So what we do here?

- ◆ Fast Action in Services
- ◆ Unconditional Parts Supply
- ◆ Strong Professionalism
- ◆ Spotless Satisfaction

This is how STONIMAGE started to make business. What we do is giving the fastest services after supplying high-quality level products.

XINXIANG STONIMAGE TECHNOLOGY CO. LTD

新乡市石像科技有限公司

Email: inquire@stonimage.com

Tel: +86 373 5853611 +86 173 3736 9213

www.stonimagelift.com

Add: 1522#, Gongyuanguoji, Hongqi district, Xinxiang city, Henan, China

## STONIMAGE

was founded at end of 2014, is a global brand and manufacturer of lifting equipment and material handling equipment, we owns the most professional engineering team, R & D center and manufacturing base with rich experience in lifting industry. We are working with full passion in continuous innovation and improving services level.

Currently, STONIMAGE is focusing on Innovation, Manufacturing and Supplying of various lifting equipment, transportation machinery and construction machinery, mainly as below:

- Ladder Lift, Solar Panel Lift, Glass and window lift, Glass trolley
- Cargo truck elevator, Fish elevator, Mountain cargo Lift
- Electric scaffold, Wall building platform
- Electric forklift, Brick stacker, Installation Forklift for Pipe/Panel
- Scissor lift, Retractable stairs, Belt conveyor
- Restaurant Meal elevator



- **Aerial Ladder Lift**
- ✓ For Solar panel
- ✓ For Glass/window/door
- ✓ For Construction material

## Aerial Ladder Lift

- ✓ For Solar panel / bracket
- ✓ For Glass/ window/ Gate / Sunlight Room / Window Frame etc.
- ✓ For Construction material / Cement / Sand / Tile / Glazed Brick / Barrel Paint etc.
- ✓ Cargo bag lift / Air Energy / Color Steel Tile / Water Proof Roll / Wooden Material etc.
- ✓ Any cargo lift inside / outside or in narrow space



- **Overturn Tray**  
180° unload



## Technical Data

Model	Track length (m)	Max. vertical height (m)	Max. Load Capacity (kg)	Motor model/power	Standard section length (m)
EL400	4	3~4	200	PA800, 1300w	0.5+3.5
EL500	5	4~4.5	200	PA800, 1300w	0.5+3.5+1
EL600	6	5~5.5	200	PA800, 1300w	0.5+3.5+2
EL700	7	6~6.5	200	PA800, 1300w	0.5+3.5+3
EL800	8	7~7.5	200	PA800, 1300w	0.5+3+3+1.5
EL900	9	8~8.5	200	PA800, 1300w	0.5+3+3+2.5
EL1000	10	8.5~9.5	200	PA800, 1300w	0.5+3+3+2+1.5
EL1100	11	9~10.5	200	PA800, 1300w	0.5+3+3+3+1.5
EL1200	12	10~11.5	200	PA800, 1300w	0.5+3*3pc+2.5
EL1300	13	11~12.5	200	PA800, 1300w	0.5+3*3pc+2+1.5
EL1400	14	12~13.5	200	PA800, 1300w	0.5+3*4pc+1.5
EL1500	15	13~14.5	150	PA800, 1300w	0.5+3*4pc+2.5
EL1600	16	14~15	150	PA1000, 1600w	0.5+3*4pc+2+1.5
EL1700	17	15~16	150	PA1000, 1600w	0.5+3*5pc+1.5
EL1800	18	16~17	150	PA1000, 1600w	0.5+3*5+2.5
EL1900	19	17~18	150	PA1000, 1600w	0.5+3*5+2+1.5
EL2000	20	18~19	150	PA1200, 2000w	0.5+3*6+1.5

Note: the customized design / fabrication are acceptable in structure, dimension and functions.

### Technical Notes:

- 1) Galvanized steel pipe, pipe size: 40mm\*60mm,thickness1.6mm
- 2) Motor bracket: 0.5m
- 3) Speed :12-16m/min
- 4) Power supply: 220V AC 50HZ
- 5) Track length = Vertical height + 0.5~2 m
- 6) Support bar: supply one (1) pair as standard, others supplied by user depends on site condition.
- 7) Cross-bar buckle: according to model / length of lift.

**Application**  
应用案例



• Window Lift



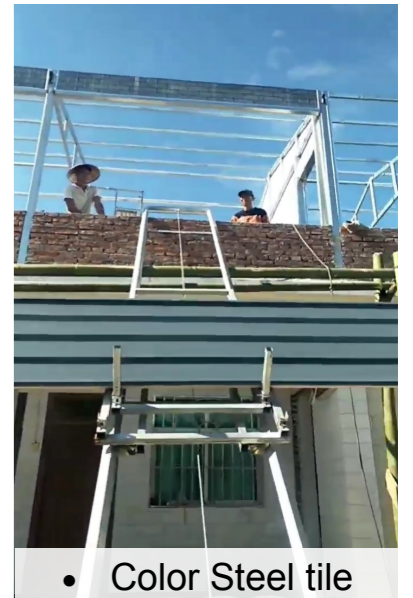
• Glass Lift



• Cement, Sand



• Air Energy



• Color Steel tile



• Solar Panel



• Solar Panel Roof



• Sunlight Room



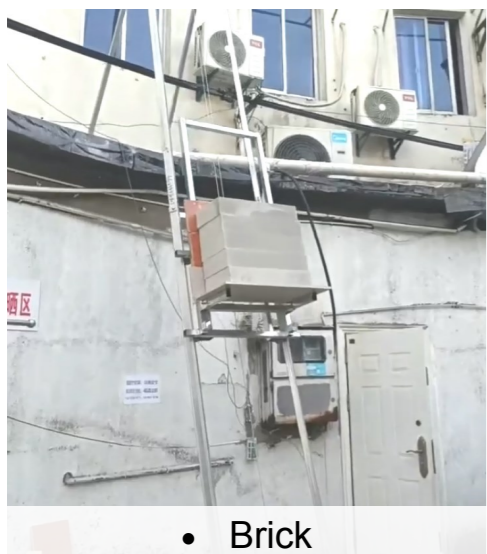
• Barrel Paint



• Wooden Material



• Office Building



• Brick



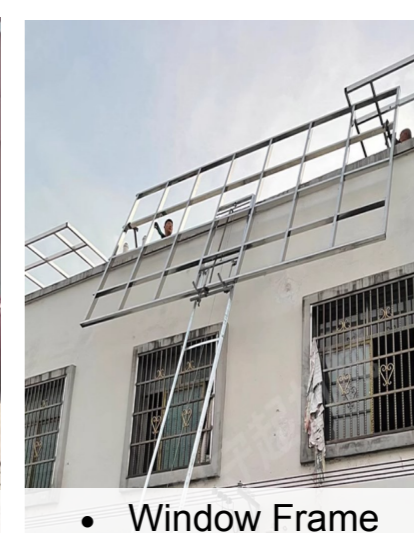
• Water proof Roll



• Cargo Bag Lift



• Gate Lift



• Window Frame



• Tile, glazed brick